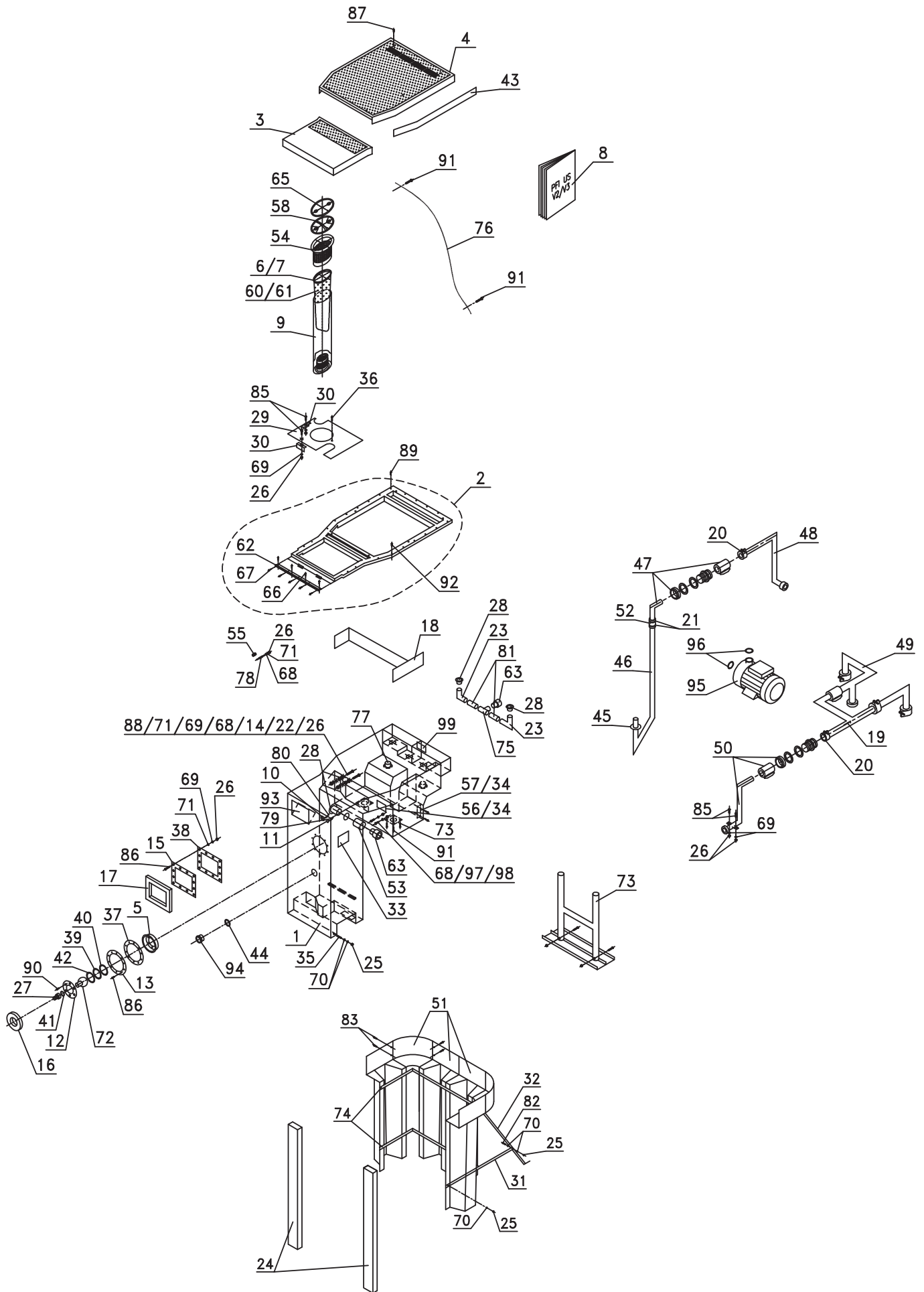


INJECTED FILTERING PANEL, 3"1/2 CANTILEVER US (PFI US V3) [01/04->]



INJECTED FILTERING PANEL, 3"1/2 CANTILEVER US (PFI US V3) [01/04->]

Item	Item description	Qty	Code	Item	Item description	Qty	Code
1	Body, PFI US	1	16597	50	Discharge line, on PFI		
2	Pre-equipped frame, PFI US V3/G3	1	17058		After Sales Service unit	1	90263
3	Filter compart. lid, PFI US V3	1	16610	51	Masonry chimney kit	1	90223
4	Technical compartment lid, PFI US V3/G3	1	16611	52	Rubber coupling ø63mm	1	01747
5	Box, nozzle support GIM/PFI	1	90213	53	Sleeve, drainage PVC ø50	1	01703
6	Filtering ring, public exterior	1	09765	54	Basket, white, bowl top (PER6)	1	19666
7	Filtering ring, interior (PER24)	1	19687	55	PE13P long + nut + seal 19x25x1.5	1	08958
8	PFI US V2/V3 technical documentation	1	16590	56	Plate, copper wire only	1	09266
9	Filter holder, GR Injected 97	1	09145	57	Identification plate, GIM/PFI US	1	16605
10	Air button	1	09076	58	Skim-vac brush socket (PER24)	1	19689
11	Pneumatic button (with M6 nut + SS ø6 washer)	1	09074	60	Filt bag, 15 mic (PER12)	1	19694
12	Flange, nozzle	1	09020	61	Filt bag, 30 mic (PER12)	1	19696
13	Flange, PFI liner discharge	1	08981	62	Liner lock	0.58ml	01019
14	Grounding lug	4	09278	63	Adapter, USA 2"/ 50mm	2	90162
15	Flange, mixed unit skimmer	1	08980	65	Skim-vac regulator (PER24)	1	19690
16	Flange cover, ref liner PFI	1	90201	66	Rivet, SS 4x12	6	09751
17	Flange cover, simple skimmer	1	90202	67	Rivet, plastic, PFI frame	5	90229
18	Wedging, PFI filtration compart.	1	90241	68	Washer, fibre 8x13mm	5	09582
19	Allen wrench, 5mm	1	90067	69	Lockwasher, fan-type SS A4 ø6	28	09397
20	Clamp, red ø75	2	09837	70	Washer, flat AcZn 8x30 LL	100	09649
21	Collar, flexinox 13-60/80mm	2	01750	71	Flat washer, SS A4 ø6	25	09005
22	Stop nut M6 A4	2	09200	72	Ball joint	1	09021
23	Elbow, PVC ø50 90°	2	01701	73	Support, PFI technical compart.	1	90233
24	Des'co, 0.13 without liner lock	2	01038	74	Support, chimney kit (pair)	1	90234
25	Nut, Ac Zn M8	58	09651	75	Tee, ø50 PVC	1	01707
26	Nut, SS A4 M6	29	09026	76	Front cover buckle system	1	09343
27	Fitting, wastewater connection	1	01749	77	Wall feedthrough, by-pass USA	2	90036
28	End piece, smooth, D50 male + grille	3	90110	78	Wall feedthrough, clear tube	1	09293
29	Spacer, filter holder PFI	1	90216	79	Tube, clear 0.003	1.22ml	09075
30	Spacer retaining bracket GIM/PFI	2	95217	80	Tube, clear 0.006	0.3ml	09078
31	Steel strut, small model	2	16745	81	Tube, PVC ø50	0.12ml	01708
32	Steel strut, large model	2	16746	82	Screw, hex head AcZn 8x30	22	09650
33	Mandatory drain connection label	2	09700	83	Screw, hex head, self-drilling Zn 4.2x19	4	09897
34	Rivet, SS watertight 4x16	6	16479	85	Screw, pan head SS A4 6x20 slotted	4	09202
35	Threaded stud, SS M8x35	20	90004	86	Screw, CSK SS A4 6x30 Pozidrive	22	09793
36	Locking pin, filter holder	1	08921	87	Screw, mushroom head SS A4 8x30 slotted	4	09234
37	Flange seal, ref liner PFI	1	08978	88	Screw, pan head SS A4 6x30 slotted	2	90286
38	Flange seal, mixed unit skimmer	1	08979	89	Wood screw, CSK A4 5x65 Pozidrive	6	16612
39	Nozzle seal 73x60x1.5	1	09817	90	Screw, self-tapping CSK A4 5.5x25.4	6	09797
40	Nozzle seal 73x60x9	1	09586	91	Wood screw, pan head A4 4x13 Pozidrive	10	90236
41	Rubber seal, drain end fitting (ø43x34x5mm)	1	09818	92	Wood screw, CSK A4 5x80 Pozidrive	16	16613
42	Seal, Teflon	1	09024	93	PFI skimmer weir	1	90238
43	Neoprene gasket	7	02010	94	Overflow wall feedthrough	1	90037
44	Wall feedthrough flat seal	1	08988	95	Pump	1	
45	Round seal, ø75mm	1	09761	96	O-ring, ø67mm	2	09022
46	Suction line, lower GIM/PFI unit	1	95220	97	Screw, nylon 6X25 fillister head, slotted	2	16607
47	Suction line, upper PFI After Sales Service unit	1	90260	98	Nut, M6 nylon	2	16608
48	Suction line, on PFI pump side	1	90222	99	Grounding label	1	16603
49	Piping, by-pass GIM/PFI	1	90258				